



HEDIS® Lunch and Learn

Well-Child Visits

Sherry Griffith RN, BSN



HEDIS[®] News You can Use



Lunch and Learns will reinforce and elaborate on HEDIS News You Can Use information

Monthly Webinars: 30 minutes, 1 HEDIS topic



Well-Child Visits in the First 30 Months of Life (W30)



Well-Child Visits in the First 30 months of Life (W30) - Criteria

What makes a member compliant?

Members who had the following number of well-child visits with a PCP:

- **Well-Child Visits in the First 15 Months** – Children who turned 15 months old during the measurement year and had *six or more* well-child visits with a Primary Care Provider (PCP). The well-child visits must be received on or before the child turning 15 months old.
- **Well-Child Visits for Age 15 Months – 30 Months** – Children who turned 30 months old during the measurement year and had *two or more* well-child visits with a Primary Care Provider (PCP) between 15 months and 30 months of age. The well-child visits must be received on or before the child turning 30 months old.



Administrative Methodology



Well-Child Visits in the First 30 months of Life (W30) - Coding

CPT: 99381-99385, 99391-99395, 99461

ICD-10 CM: Z00.00, Z00.01, Z00.110, Z00.111, Z00.121, Z00.129, Z00.2, Z00.3, Z01.411, Z01.419, Z02.5, Z76.1, Z76.2

HCPCS: G0438, G0439, S0302, S0610, S0612, S0613



Child and Adolescent Well-Care Visits (WCV)

Child and Adolescent Well-Care Visits (WCV)- **Criteria**

What makes a member compliant?

Members who are 3 to 21 years of age in the measurement year and received at least one comprehensive well-care visit with a Primary Care Provider (PCP) or an OB/GYN provider in the measurement year. **Four rates are reported:**

- 3-11 years
- 12-17 years
- 18-21 years
- Total rate: 3-21 years

 **Administrative Methodology**





Child and Adolescent Well-Care Visits (WCV)- Coding

CPT: 99381-99385, 99391-99395, 99461

ICD-10 CM: Z00.00, Z00.01, Z00.110, Z00.111, Z00.121, Z00.129, Z00.2, Z00.3, Z01.411, Z01.419, Z02.5, Z76.1, Z76.2

HCPCS: G0438, G0439, S0302, S0610, S0612, S0613

*Aetna Better Health® of West Virginia will pay for a well visit outside of the 12-month cycle.

Member Incentive Program:



\$25.00 Reward: Members ages 12-21 who have a well-care exam completed during the calendar year.

Challenges

Why Gaps in Care?



- **Measures captured via administrative methodology-no chart review during HEDIS season**
- **Well-child visits not billed/coded**
- **FQHC/RHC – if T1015 on a claim does not include well-child codes**
- **Transportation barriers**
- **Volume of sick/acute illness, particularly in the W30 age groups**
- **CODING!
Not billed = NON-COMPLIANT**
- **NICU after birth**

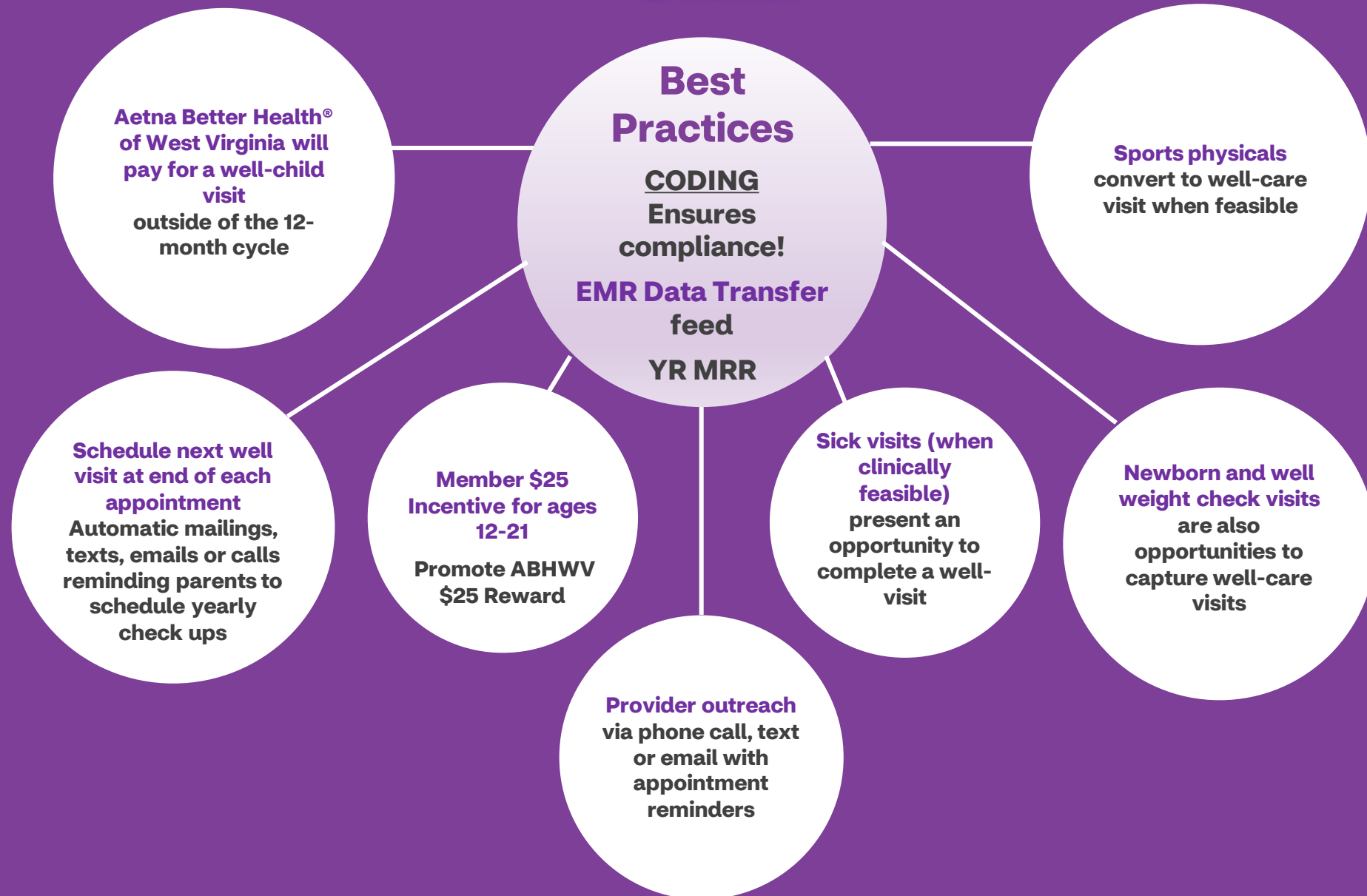


- **Belief “don’t fix it unless it’s broken”**
- **Does not understand need for well-care as well as sick care, not as high priority**
- **Insufficient understanding of early intervention**
- **Adolescents may not routinely present to the PCP office unless seeking care for illness or injury (18-21 least compliant)**
- **Social Determinants of Health, support system – there could be potential factor(s) impacting compliance**
- **UC/ER overutilization; services rendered during an inpatient or ED visits do NOT meet**



- **Limited office hours (after hours/weekends)**
- **If ABHWV is the secondary insurance, may not have a claim.**
- **Early visits after birth that can potentially be well-child visits as recommended by AAP**
- **Missed opportunities – perform well-child at same time as sick visit when clinically feasible**
- **Not realizing ABHWV pays for well-visit outside 12-month cycle**

Take-Away Actions-Well Child



Take-Away Actions-Well Child cont.



ABHWV website

Provider HEDIS Section

There is now a HEDIS tab within the Provider Tab on the ABHWV website. The following are now available:

1. **What is HEDIS?** – a short description of HEDIS
2. **HEDIS News You Can Use** –emailed to providers each month and will be available on the website, including current and prior months
3. **HEDIS Toolkit For Provider Offices** – comprehensive document of all HEDIS measures, including a coding/billing section. This is updated annually or sooner as needed.
4. **HEDIS Lunch and Learn Webinars For Providers** – monthly webinars such as the one today. Links for past webinars and invite information for the next upcoming Lunch and Learn will be here.

<https://www.aetnabetterhealth.com/westvirginia/providers/hedis.html>

Closing Thoughts and Resources

Members trust you!

Parents/caregivers/patients consider you their most trusted source of medical information.

Your guidance and encouragement is critical in their health management.

Allow time for discussion and questions. Hearing your answers can help parents/caregivers/patients feel more confident and comfortable.

ABHWV Quality Partnerships

Melani McNinch, Senior Mgr, ABHWV Quality HEDIS Manager

- ABHWVHEDIS@aetna.com

Sherry Griffith, ABHWV Quality HEDIS Project Manager

- ABHWVHEDIS@aetna.com

EMR data file transfer and YR MRR options

- **Tosha Morris, HEDIS Project Manager**
ABHWVHEDIS@aetna.com
304-348-2003

Wellness Event Partnering

- **David Roberts, Prevention & Wellness**
ABHWVHEDIS@aetna.com
304-539-9046

Quality Practice Liaison

- **Alana Hoover**
ABHWVHEDIS@aetna.com
860-900-6090

Other Resources

Great Resources:

<https://brightfutures.aap.org/materials-and-tools/guidelines-and-pocket-guide/Pages/default.aspx>

<https://dhhr.wv.gov/HealthCheck/providerinfo/Pages/default.aspx>

<https://dhhr.wv.gov/HealthCheck/providerinfo/SiteAssets/Pages/PeriodicitySchedule/2023%20Periodicity%20Schedule%20-%20APPROVED%20rev1.11.24%20%281%29.pdf>



**Thank
You for
making a
difference!**



